

TYPE MP1d

3 chambres / *Bedrooms*
3 salles de bain / *Bathrooms*

Superficie / *Area* 1795 pi² sq. ft. (167 m²)
Balcons / *Balconies* 306 pi² sq. ft. (28 m²)
Terrasse / *Terrace* 495 pi² sq. ft. (46 m²)
TOTAL 2596 pi² sq. ft. (241 m²)

SYMPHONIA
SOL

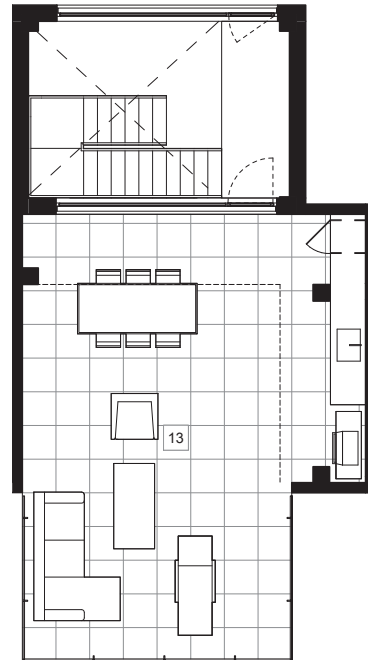
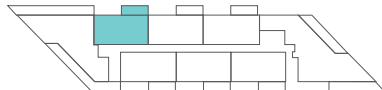
- | | |
|---|--|
| 01 Séjour, salle à manger
<i>Living room, dining room</i>
26' - 4" x 12' - 7" | 08 Salle de bain 2
<i>Bathroom 2</i>
6' - 2" x 8' - 1" |
| 02 Chambre principale
<i>Master bedroom</i>
10' - 8" x 15' - 5" | 09 Salle de bain 3
<i>Bathroom 3</i>
8' - 4" x 5' - 4" |
| 03 Chambre 2
<i>Bedroom 2</i>
10' - 0" x 10' - 3" | 10 Buanderie
<i>Laundry</i>
3' - 0" x 5' - 4" |
| 04 Chambre 3
<i>Bedroom 3</i>
11' - 11" x 10' - 11" | 11 Balcon 1
<i>Balcony 1</i>
21' - 4" x 7' - 2" |
| 05 Cuisine
<i>Kitchen</i>
15' - 0" x 8' - 7" | 12 Balcon 2
<i>Balcony 2</i>
21' - 4" x 7' - 2" |
| 06 Garde-manger
<i>Pantry</i>
3' - 5" x 5' - 11" | 13 Terrasse
<i>Terrace</i>
18' - 3" x 26' - 7" |
| 07 Salle de bain 1
<i>Bathroom 1</i>
12' - 9" x 5' - 0" | |

UNITÉ UNIT

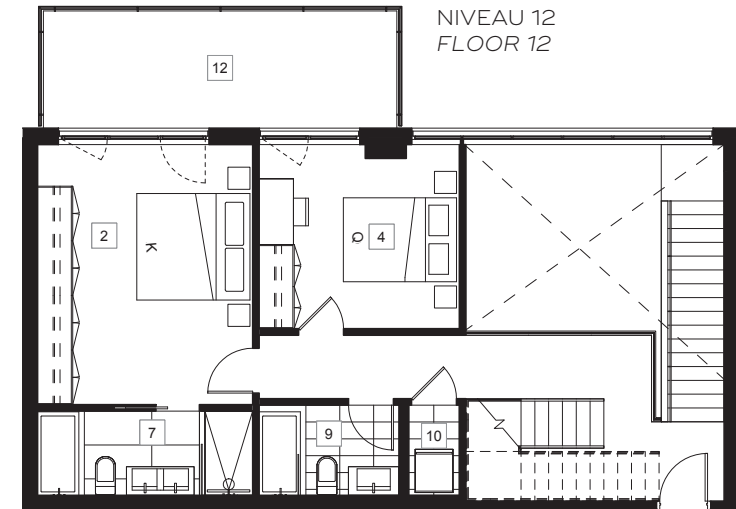
1102

ÉTAGES FLOORS

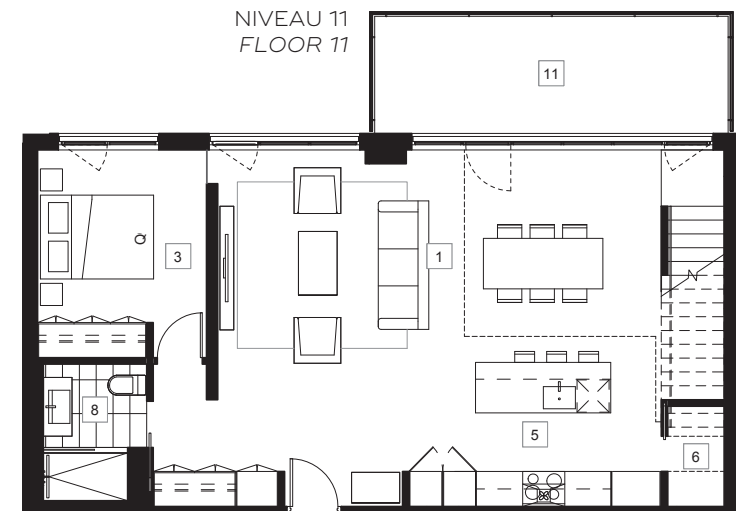
11 + 12 + TOIT TERRASSE ROOFTOP TERRACE



NIVEAU TOIT TERRASSE
ROOFTOP TERRACE FLOOR



NIVEAU 12
FLOOR 12



NIVEAU 11
FLOOR 11

Les superficies et les dimensions sont approximatives et sujettes à des modifications sans préavis. La superficie brute de l'unité est calculée en incluant la moitié des murs mitoyens, le mur extérieur et le mur du corridor. *Sizes and measurements are approximate and subject to change without notice. The gross area of a unit takes into account half the demising walls, the outside wall and the wall to the hallway.*