

# TYPE MP1c

3 chambres / *Bedrooms*  
3 salles de bain / *Bathrooms*

Superficie / <i>Area</i>	1840 pi <sup>2</sup> sq.ft. (171 m <sup>2</sup> )
Balcons / <i>Balconies</i>	306 pi <sup>2</sup> sq.ft. (28 m <sup>2</sup> )
Terrasse / <i>Terrace</i>	615 pi <sup>2</sup> sq.ft. (57 m <sup>2</sup> )
<b>TOTAL</b>	<b>2761 pi<sup>2</sup> sq.ft. (256 m<sup>2</sup>)</b>

SYMPHONIA  
SOL

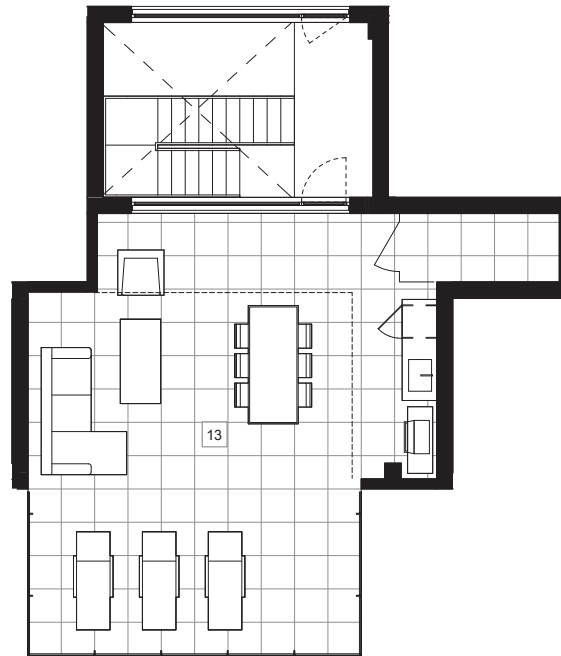
- |   |  |
|---|--|
| 01 Séjour, salle à manger<br><i>Living room, dining room</i><br>27' - 5" x 12' - 8" | 08 Salle de bain 2<br><i>Bathroom 2</i><br>6' - 3" x 8' - 1" |
| 02 Chambre principale<br><i>Master bedroom</i><br>11' - 0" x 15' - 5"               | 09 Salle de bain 3<br><i>Bathroom 3</i><br>8' - 4" x 5' - 4" |
| 03 Chambre 2<br><i>Bedroom 2</i><br>10' - 2" x 10' - 3"                             | 10 Buanderie<br><i>Laundry</i><br>3' - 0" x 5' - 4"          |
| 04 Chambre 3<br><i>Bedroom 3</i><br>11' - 11" x 10' - 11"                           | 11 Balcon 1<br><i>Balcony 1</i><br>21' - 4" x 7' - 2"        |
| 05 Cuisine<br><i>Kitchen</i><br>15' - 0" x 8' - 7"                                  | 12 Balcon 2<br><i>Balcony 2</i><br>21' - 4" x 7' - 2"        |
| 06 Garde-manger<br><i>Pantry</i><br>3' - 4" x 5' - 11"                              | 13 Terrasse<br><i>Terrace</i><br>22' - 5" x 26' - 7"         |
| 07 Salle de bain 1<br><i>Bathroom 1</i><br>13' - 1" x 5' - 0"                       |  |

## UNITÉ UNIT

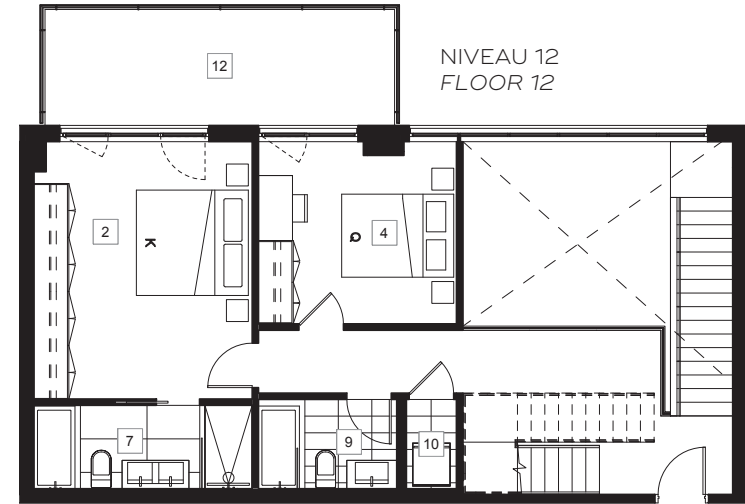
1104

## ÉTAGES FLOORS

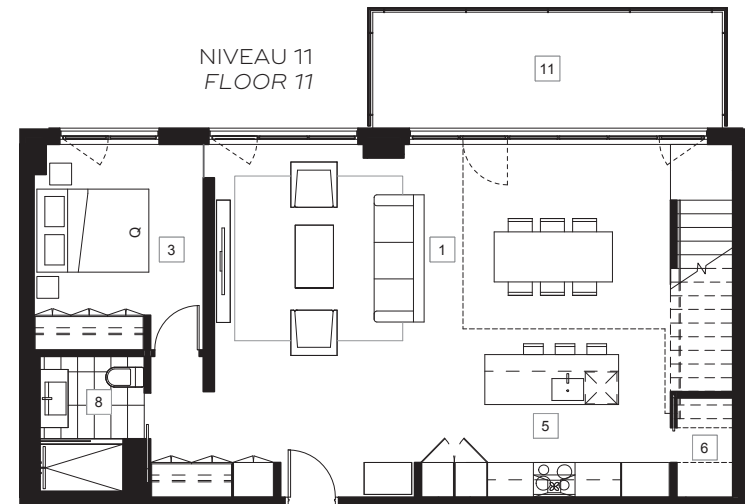
11 + 12 + TOIT TERRASSE ROOFTOP TERRACE



NIVEAU TOIT TERRASSE  
ROOFTOP TERRACE FLOOR



NIVEAU 12  
FLOOR 12



NIVEAU 11  
FLOOR 11

Les superficies et les dimensions sont approximatives et sujettes à des modifications sans préavis. La superficie brute de l'unité est calculée en incluant la moitié des murs mitoyens, le mur extérieur et le mur du corridor. *Sizes and measurements are approximate and subject to change without notice. The gross area of a unit takes into account half the demising walls, the outside wall and the wall to the hallway.*