

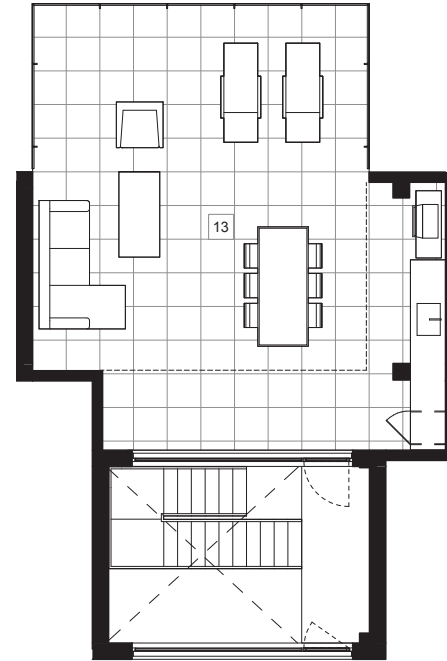
TYPE MP1

3 chambres / *Bedrooms*
3 salles de bain / *Bathrooms*

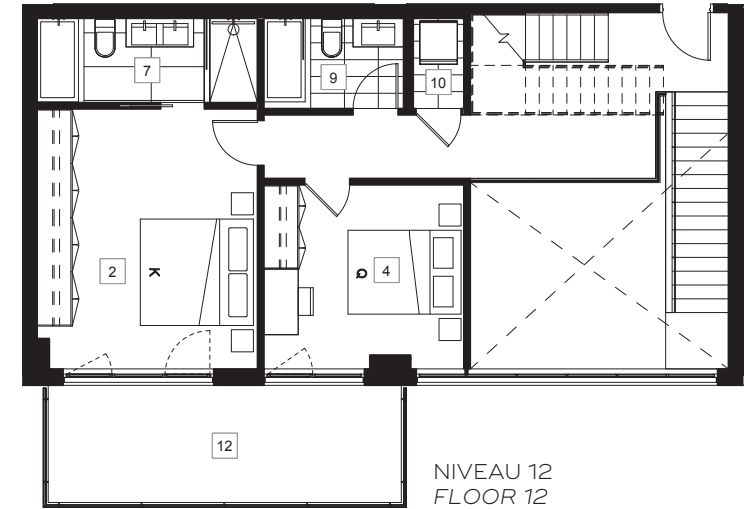
Superficie / <i>Area</i>	1809 pi ² sq.ft. (168 m ²)
Balcons / <i>Balconies</i>	306 pi ² sq.ft. (28 m ²)
Terrasse / <i>Terrace</i>	584 pi ² sq.ft. (54 m ²)
TOTAL	2699 pi² sq.ft. (250 m²)

SYMPHONIA
SOL

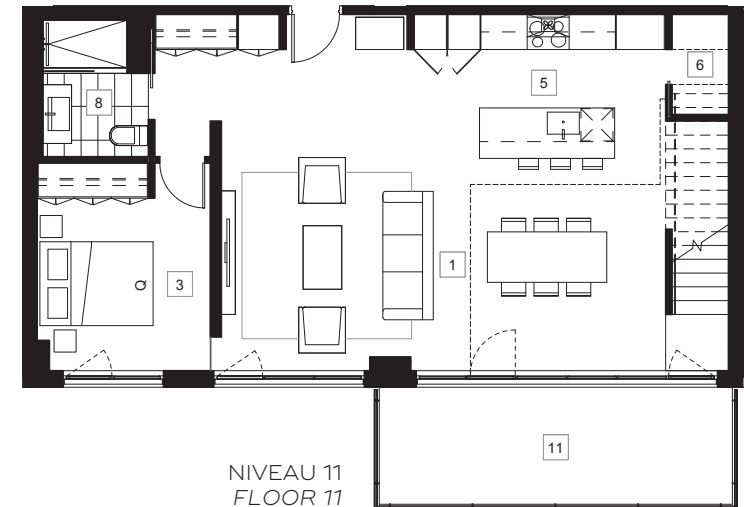
- | | |
|---|--|
| 01 Séjour, salle à manger
<i>Living room, dining room</i>
26' - 5" x 12' - 7" | 08 Salle de bain 2
<i>Bathroom 2</i>
6' - 3" x 8' - 1" |
| 02 Chambre principale
<i>Master bedroom</i>
11' - 0" x 15' - 5" | 09 Salle de bain 3
<i>Bathroom 3</i>
8' - 4" x 5' - 4" |
| 03 Chambre 2
<i>Bedroom 2</i>
10' - 3" x 10' - 3" | 10 Buanderie
<i>Laundry</i>
3' - 0" x 5' - 4" |
| 04 Chambre 3
<i>Bedroom 3</i>
11' - 11" x 10' - 11" | 11 Balcon 1
<i>Balcony 1</i>
21' - 4" x 7' - 2" |
| 05 Cuisine
<i>Kitchen</i>
14' - 11" x 8' - 7" | 12 Balcon 2
<i>Balcony 2</i>
21' - 4" x 7' - 2" |
| 06 Garde-manger
<i>Pantry</i>
3' - 4" x 5' - 11" | 13 Terrasse
<i>Terrace</i>
22' - 5" x 26' - 7" |
| 07 Salle de bain 1
<i>Bathroom 1</i>
13' - 1" x 5' - 0" | |



NIVEAU TOIT TERRASSE
ROOFTOP TERRACE FLOOR



NIVEAU 12
FLOOR 12



NIVEAU 11
FLOOR 11

UNITÉ UNIT

1109

ÉTAGES FLOORS

11 + 12 + TOIT TERRASSE ROOFTOP TERRACE



Les superficies et les dimensions sont approximatives et sujettes à des modifications sans préavis. La superficie brute de l'unité est calculée en incluant la moitié des murs mitoyens, le mur extérieur et le mur du corridor. *Sizes and measurements are approximate and subject to change without notice. The gross area of a unit takes into account half the demising walls, the outside wall and the wall to the hallway.*