

TYPE MD1a

3 chambres / *Bedrooms*
3 salles de bain / *Bathrooms*

Superficie / *Area* 1721 pi² sq.ft. (160 m²)
Terrasse / *Terrace* 396 pi² sq.ft. (37 m²)
TOTAL 2117 pi² sq.ft. (197 m²)

SYMPHONIA
SOL

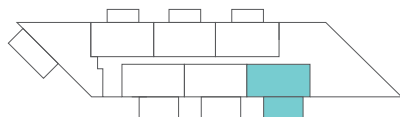
- | | |
|---|--|
| 01 Séjour, salle à manger
<i>Living room, dining room</i>
26' - 4" x 13' - 2" | 08 Salle de bain 2
<i>Bathroom 2</i>
8' - 2" x 5' - 4" |
| 02 Chambre principale
<i>Master bedroom</i>
11' - 1" x 15' - 8" | 09 Bureau
<i>Den</i>
11' - 1" x 9' - 10" |
| 03 Chambre 2
<i>Bedroom 2</i>
10' - 3" x 10' - 9" | 10 Salle de bain 3
<i>Bathroom 3</i>
6' - 3" x 8' - 1" |
| 04 Chambre 3
<i>Bedroom 3</i>
11' - 9" x 11' - 2" | 11 Buanderie
<i>Laundry</i>
3' - 0" x 5' - 4" |
| 05 Cuisine
<i>Kitchen</i>
15' - 0" x 8' - 7" | 12 Terrasse
<i>Terrace</i>
27' - 0" x 14' - 9" |
| 06 Garde-manger
<i>Pantry</i>
3' - 4" x 5' - 11" | |
| 07 Salle de bain 1
<i>Bathroom 1</i>
13' - 2" x 5' - 0" | |

UNITÉ UNIT

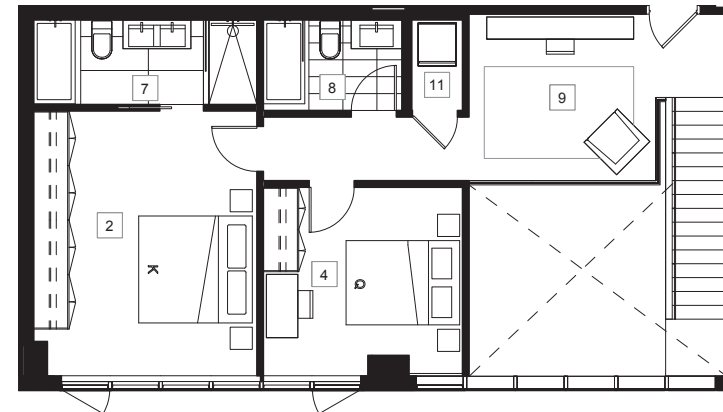
108

ÉTAGES FLOORS

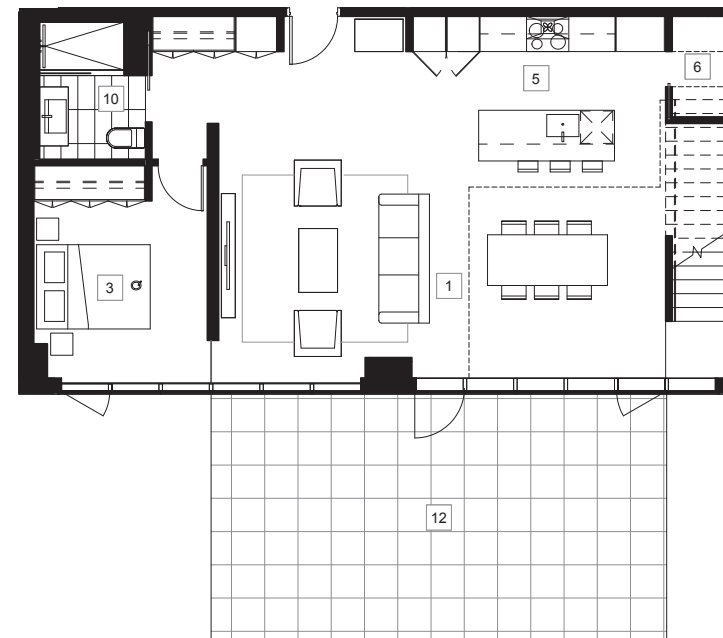
1 + 2



Les superficies et les dimensions sont approximatives et sujettes à des modifications sans préavis. La superficie brute de l'unité est calculée en incluant la moitié des murs mitoyens, le mur extérieur et le mur du corridor. *Sizes and measurements are approximate and subject to change without notice. The gross area of a unit takes into account half the demising walls, the outside wall and the wall to the hallway.*



NIVEAU 2
FLOOR 2



NIVEAU RDC
GROUND FLOOR