

# TYPE D1a

3 chambres / Bedrooms  
2 salles de bain / Bathrooms

Superficie / Area 1715 pi<sup>2</sup> sq.ft. (159 m<sup>2</sup>)  
Balcons / Balconies 895 pi<sup>2</sup> sq.ft. (83 m<sup>2</sup>)  
**TOTAL 2610 pi<sup>2</sup> sq.ft. (242 m<sup>2</sup>)**

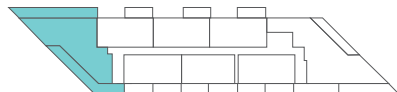
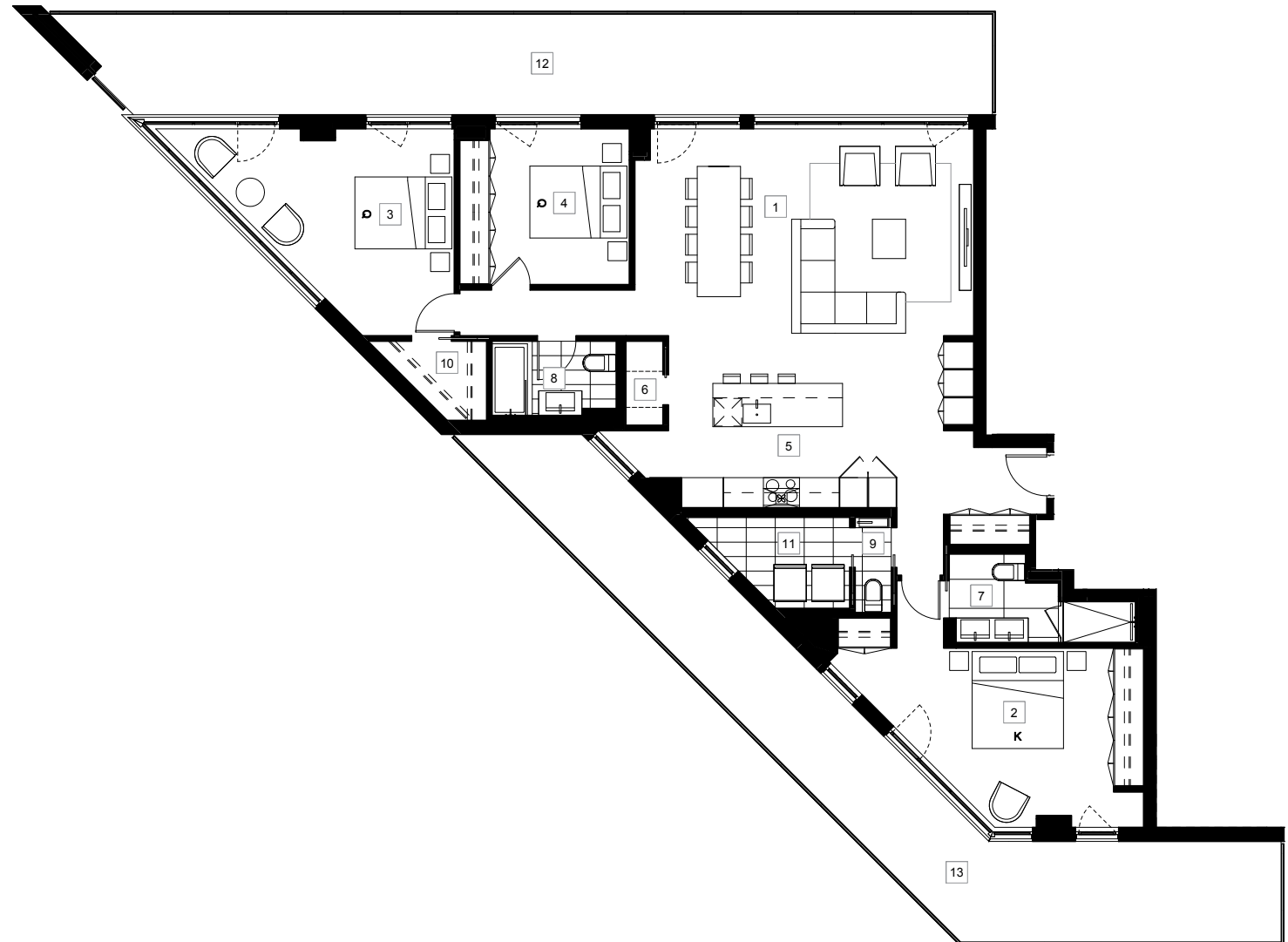
- |    |   |    |  |
|----|---|----|--|
| 01 | Séjour, salle à manger<br>Living room, dining room<br>23' - 6" x 14' - 4" | 08 | Salle de bain 2<br>Bathroom 2<br>8' - 7" x 5' - 2"                 |
| 02 | Chambre principale<br>Master bedroom<br>15' - 2" x 12' - 5"               | 09 | Salle d'eau<br>Powder room<br>2' - 6" x 6' - 7"                    |
| 03 | Chambre 2<br>Bedroom 2<br>13' - 6" x 14' - 4"                             | 10 | Penderie<br>Walk-in<br>5' - 5" x 5' - 6"                           |
| 04 | Chambre 3<br>Bedroom 3<br>9' - 8" x 10' - 9"                              | 11 | Buanderie<br>Laundry<br>7' - 11" x 6' - 4"                         |
| 05 | Cuisine<br>Kitchen<br>14' - 11" x 8' - 7"                                 | 12 | Balcon 1<br>Balcony 1<br>62' - 9" x 7' - 2"                        |
| 06 | Garde-manger<br>Pantry<br>2' - 8" x 5' - 10"                              | 13 | Balcon 2<br>Balcony 2<br>44' - 11" x 6' - 6"<br>21' - 5" x 7' - 2" |
| 07 | Salle de bain 1<br>Bathroom 1<br>12' - 11" x 4' - 2"                      |    |  |

## UNITÉ UNIT

1101

## ÉTAGE FLOOR

11



Les superficies et les dimensions sont approximatives et sujettes à des modifications sans préavis. La superficie brute de l'unité est calculée en incluant la moitié des murs mitoyens, le mur extérieur et le mur du corridor. Sizes and measurements are approximate and subject to change without notice. The gross area of a unit takes into account half the demising walls, the outside wall and the wall to the hallway.