

TYPE C5b

2 chambres / Bedrooms
2 salles de bain / Bathrooms

Superficie / Area 1533 pi² sq.ft. (142 m²)
Balcons / Balconies 784 pi² sq.ft. (73 m²)
TOTAL 2317 pi² sq.ft. (215 m²)

SYMPHONIA
SOL

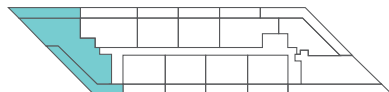
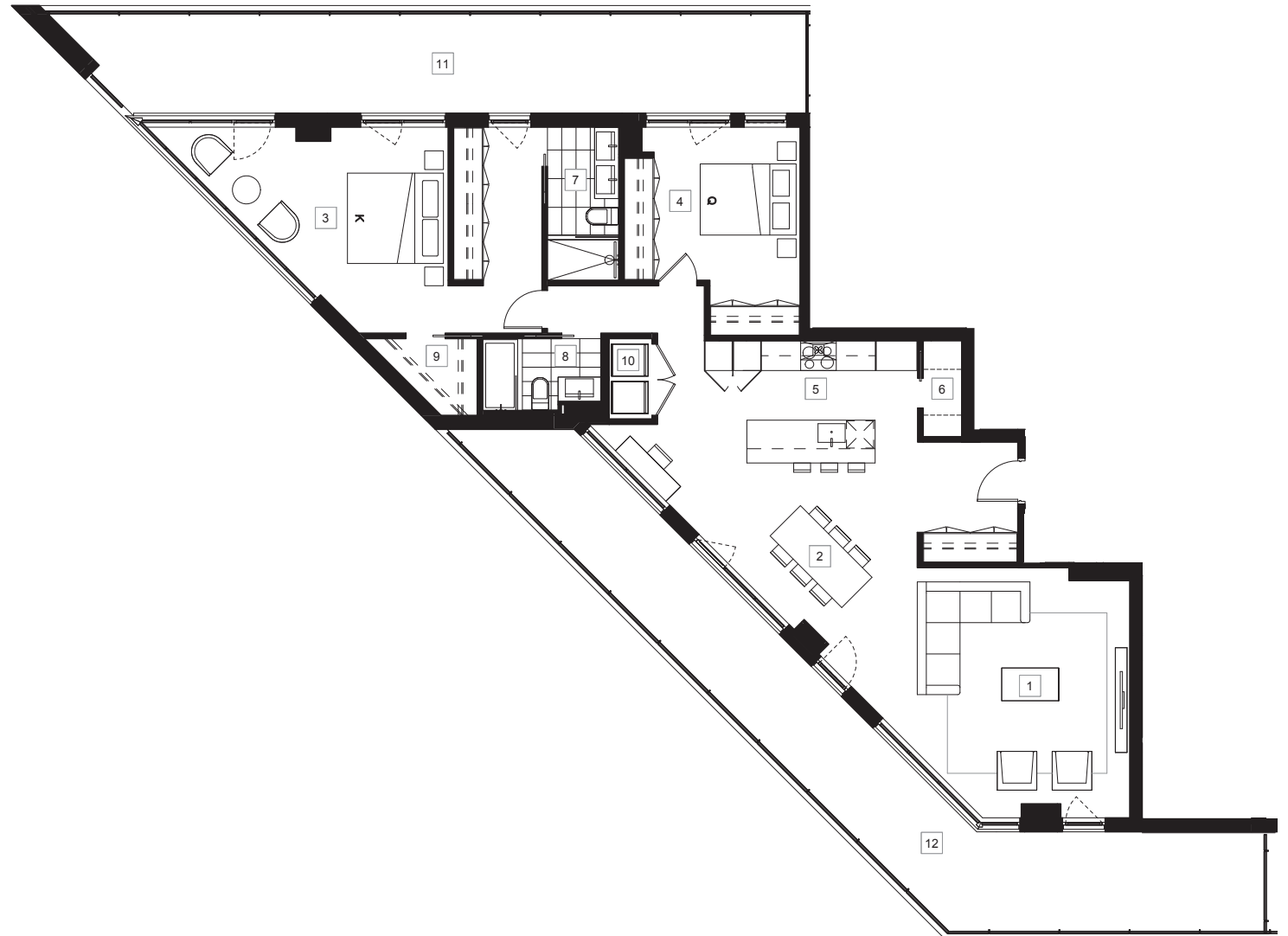
- | | |
|--|--|
| 01 Séjour
Living room
17' - 4" x 16' - 7" | 08 Salle de bain 2
Bathroom 2
8' - 3" x 5' - 0" |
| 02 Salle à manger
Dining room
14' - 2" x 11' - 10" | 09 Penderie
Walk-in
5' - 3" x 5' - 5" |
| 03 Chambre principale
Master bedroom
15' - 1" x 11' - 1" | 10 Buanderie
Laundry
3' - 0" x 5' - 7" |
| 04 Chambre 2
Bedroom 2
10' - 3" x 10' - 9" | 11 Balcon 1
Balcony 1
51' - 1" x 7' - 0" |
| 05 Cuisine
Kitchen
14' - 11" x 8' - 7" | 12 Balcon 2
Balcony 2
45' - 3" x 6' - 4"
21' - 6" x 7' - 0" |
| 06 Garde-manger
Pantry
2' - 8" x 6' - 9" | |
| 07 Salle de bain 1
Bathroom 1
5' - 0" x 10' - 9" | |

UNITÉ UNIT

301

ÉTAGE FLOOR

3



Les superficies et les dimensions sont approximatives et sujettes à des modifications sans préavis. La superficie brute de l'unité est calculée en incluant la moitié des murs mitoyens, le mur extérieur et le mur du corridor. Sizes and measurements are approximate and subject to change without notice. The gross area of a unit takes into account half the demising walls, the outside wall and the wall to the hallway.