

# TYPE C5

2 chambres / Bedrooms  
2 salles de bain / Bathrooms

Superficie / Area 1533 pi<sup>2</sup> sq. ft. (142 m<sup>2</sup>)  
Balcons / Balconies 220 pi<sup>2</sup> sq. ft. (21 m<sup>2</sup>)  
**TOTAL 1753 pi<sup>2</sup> sq. ft. (163 m<sup>2</sup>)**

SYMPHONIA  
**SOL**

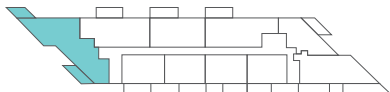
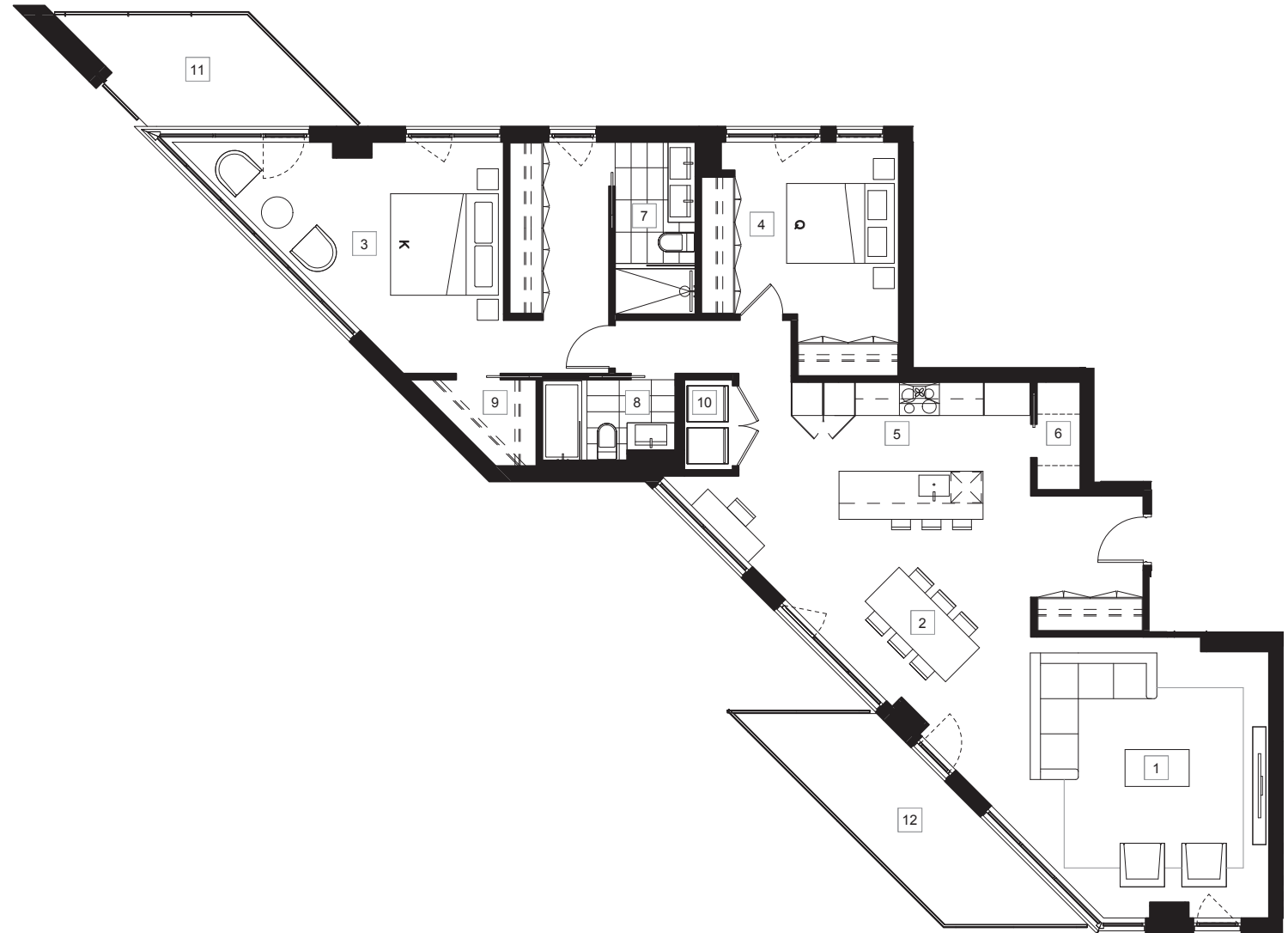
- |  |   |
|--|---|
| 01 Séjour<br>Living room<br>17' - 4" x 16' - 7"                | 08 Salle de bain 2<br>Bathroom 2<br>8' - 3" x 5' - 0" |
| 02 Salle à manger<br>Dining room<br>14' - 2" x 11' - 10"       | 09 Penderie<br>Walk-in<br>5' - 3" x 5' - 5"           |
| 03 Chambre principale<br>Master bedroom<br>15' - 1" x 11' - 1" | 10 Buanderie<br>Laundry<br>3' - 0" x 5' - 7"          |
| 04 Chambre 2<br>Bedroom 2<br>10' - 3" x 10' - 9"               | 11 Balcon 1<br>Balcony 1<br>13' - 5" x 7' - 2"        |
| 05 Cuisine<br>Kitchen<br>14' - 11" x 8' - 7"                   | 12 Balcon 2<br>Balcony 2<br>19' - 1" x 6' - 6"        |
| 06 Garde-manger<br>Pantry<br>2' - 8" x 6' - 9"                 |   |
| 07 Salle de bain 1<br>Bathroom 1<br>5' - 0" x 10' - 9"         |   |

## UNITÉS UNITS

401, 801, 1001,

## ÉTAGES FLOORS

4, 8, 10



Les superficies et les dimensions sont approximatives et sujettes à des modifications sans préavis. La superficie brute de l'unité est calculée en incluant la moitié des murs mitoyens, le mur extérieur et le mur du corridor. Sizes and measurements are approximate and subject to change without notice. The gross area of a unit takes into account half the demising walls, the outside wall and the wall to the hallway.